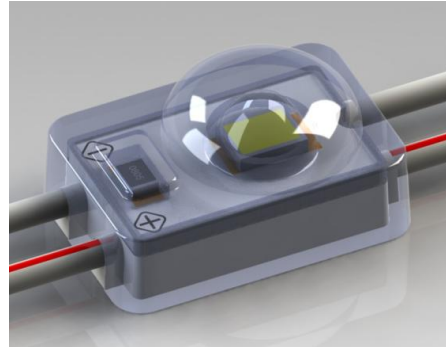


12VDC/30mA/0.36W/34typ.Lumen  
/150 Beam angle

### 1. Features

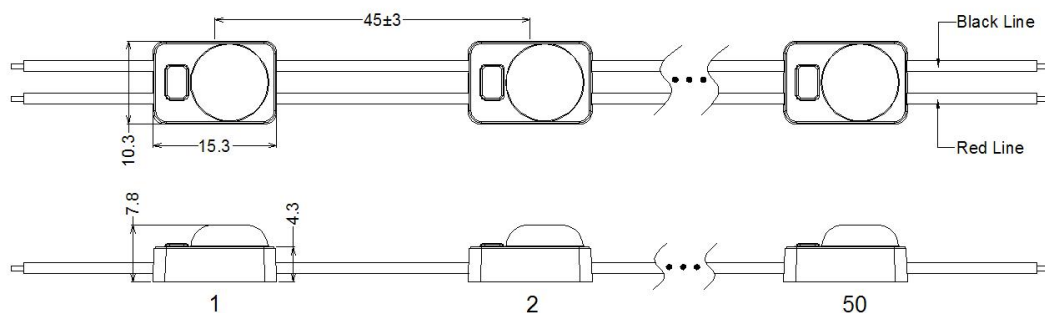
- Constant Voltage Technology, 50pcs per series.
- Injection molding process, water proof: IP 67.
- High efficiency chip, high brightness and reliability.
- 5 years warranty.



### 2. Application

- Channel letter lighting.
- Letter background lighting.
- Logo lighting.

### 3. Dimensions



Unit:mm

### 4. Optical parameters (module base)

| Part No.   | Color Range            |                        |                        | Flux Range |            | Beam angle |
|------------|------------------------|------------------------|------------------------|------------|------------|------------|
|            | Min. CCT or wavelength | Typ. CCT or wavelength | Max. CCT or wavelength | Min. Lumen | Typ. Lumen |            |
| Warm white | 2700 K                 | 3000 K                 | 3200 K                 | 27         | 30         | 150°       |
| Pure white | 6000 K                 | 7000 K                 | 8000 K                 | 30         | 34         | 150°       |
| Cool white | 9000 K                 | 15000 K                | 22000 K                | 27         | 30         | 150°       |

### 5. Electrical parameters

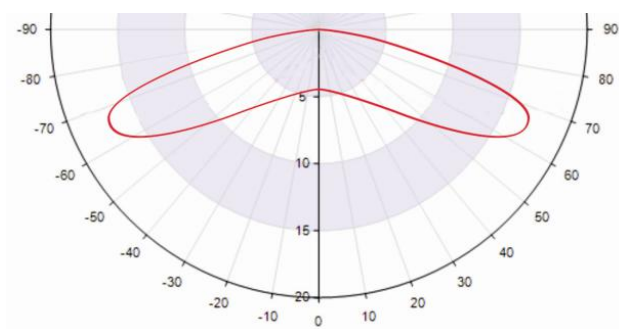
|                                   |                     |
|-----------------------------------|---------------------|
| LED                               | 9V 2835             |
| Supply voltage range (rated)      | 12 VDC              |
| Supply Current range (per module) | 30 mA ±3 mA @ DC12V |
| Power range (per module, rated)   | 0.36 W ±10% @ DC12V |

*Note: The current will change in a certain range if the supply voltage changes*

## 6. Environmental and Application Conditions

|  |              |
|--|--------------|
| Ambient temperature range (TA on free air) | -25.....+55℃ |
| Storage temperature range                  | -40.....+65℃ |
| IP rating                                  | IP66         |

## 7. Light distribution graph



### Attention:

- Maximum number of modules of one chain is 50pcs from power supplier to single end.
- The given illuminance parameters ensure illuminance on the surface. Depending on the type of material used for channel letters or lighting boxed, the parameters can change. More brightness is obtained if distances between LED modules are reduced.
- The LED module itself and all its components may not be mechanical stressed.
- Please ensure that the power supply is adequate power to operate the total load. Only qualified personnel should be allowed to perform installations.
- The design of the housing should be according to the IP standards in the application.
- If surge protection structure not within power supplier, a lightening protector should be needed additionally.