

**LED SILICON NEON FLEX  
8\*16MM (RGB)**

**1. Features**

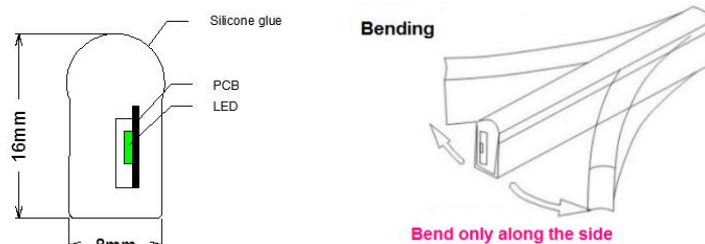
- Light source: High luminous efficiency, SMD2835
- Process & Material: High light transmittance, food-grade environmental silicone material, integrated extrusion molding technology
- Optical Design: Unique optical light distribution structure design, uniform lighting surface and no shadow.
- Appearance Design: Compared with the traditional neon tube or PVC guardrail tube, the silicone material has good flexibility, the simple and stylish appearance, which is exquisite and unique.
- Environmental Features: Resistance to saline solutions, acids&alkali, corrosive gases and UV



**2. Application**

- Neon tube light source
- General and cove lighting
- Signage

**3. Dimensions**



**4. Environmental and Application Conditions**

Ambient temperature range (Ta on free air)	-25.....+55℃
Operating (case) temperature range (Tc)	-25.....+55℃
Storage temperature range	-25.....+65℃
IP rating	IP65

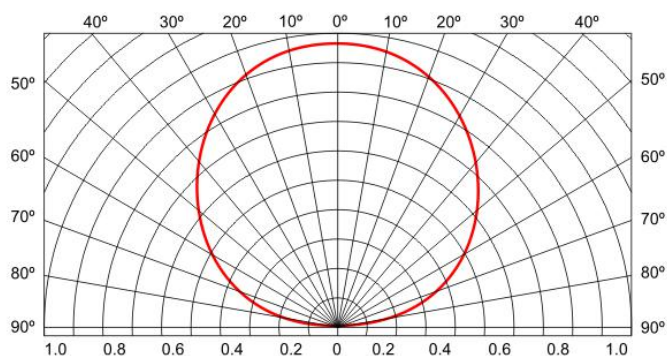
## 5. Electrical parameters

LED	5050
Supply voltage (rated)	12 VDC
Supply Current (per meter)	1200 mA max @DC12V
Power (per meter, rated)	14.4W max @ DC12V

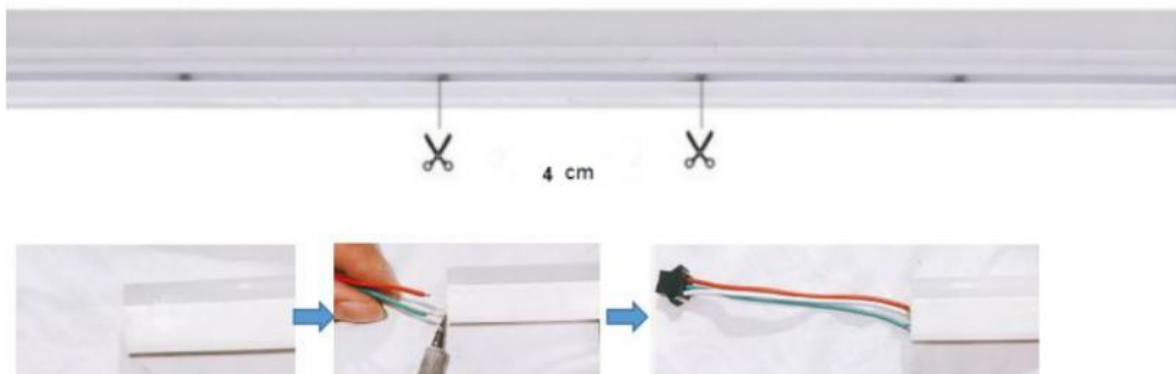
## 6. Basic Parameters

Part No.	Input	LED type	Color	Cutting unit	Beam angle
NHS-0816-12AQ	DC12V	5050 RGB	RGB	4 cm	120°

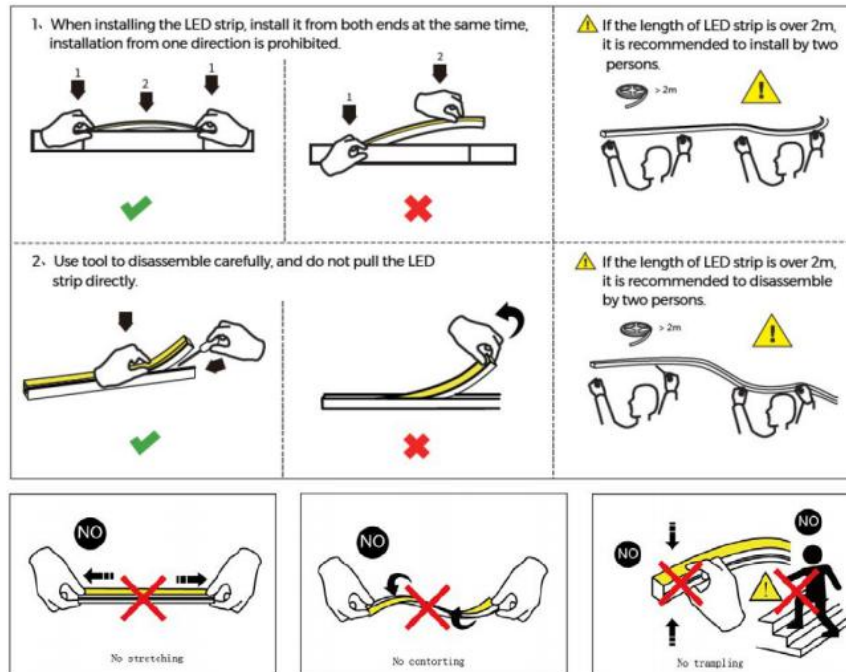
## 7. Light distribution graph



## 8. Cutting diagram



## 9. Installation



### Attention:

- Use a 12VDC isolated power supply to drive the neon lamp strip and the ripple wave of constant voltage source shall be less than 5%. It is not allowed to use RC voltage reduction or non-isolated power supply to drive the neon lamp strip.
- In actual applications, 20% of the power supply shall be kept (only 80% of the power is used) to guarantee that sufficient voltage is available to drive the product.
- Attention shall be paid to safe operation. After powering on, it is not allowed to touch the AC power supply to avoid an electric shock.
- Attention shall be paid to the positive and negative poles of the wires during installation and whether the power supply conforms to required voltages to avoid damages.
- Avoid scratching, distortion and irregular bending of the product during installation; otherwise it may cause irreparable damage to the product.
- Please do not bend the strip into an arc with a radius less than 30mm to ensure the longevity and reliability, the bending radius too small will damage the product itself.
- If the actual length of application exceeds the specified using length, it will lead to overload heating
- and uneven brightness.
- To keep the eyes from being harmed, try to avoid staring at the glowing side of the LED strip for a long time.
- Non-professionals are prohibited from installing, disassembling and repairing the product.
- Do not use any acid or alkaline adhesive to fix products (including not limited to glass cement, etc.)
- Product is not suitable for use in swimming pools and fountains.